



M2M CDMA Router



Perfect for

- Point-to-point or point-to-multipoint machine-to-machine IP connectivity
- Controlling and monitoring of connected machines from remote locations
- Collection and analysis of data from connected machines
- Commercial and Industrial deployments in harsh environments

KEY FEATURES

- ⌚ Dual-band CDMA (BC0/BC1), 800/1900MHz
- ⌚ CDMA data speeds up to 3.1 Mbps DL
- ⌚ Ethernet port with full passive Power over Ethernet (PoE) support (802.3af)
- ⌚ Internal diversity antennas with option for external main antenna (auto-sensing)
- ⌚ Intelligent, Tri-Colour LED display for clear, easy to read modem status information
- ⌚ Extensive device management with support for TR-069, Web GUI and full feature management with SMS
- ⌚ Optimized web configuration UI
- ⌚ Flexible mounting suitable for in-home use or industrial applications with built-in wall mount, DIN and C-Rail mounting options



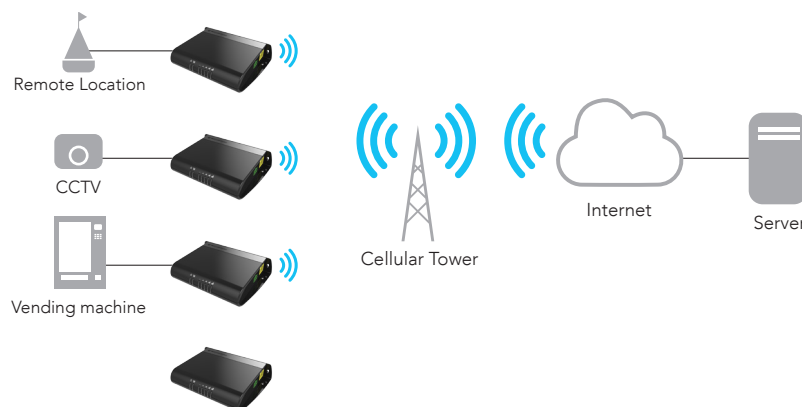


M2M CDMA Router

The NWL-11 series is a high performing dual band CDMA Router that delivers the high speed and wide coverage afforded by Verizon's CDMA network. Designed for plug and play Ethernet IP connectivity, its lightweight, compact design makes it suitable for a broad range of industry applications. The device incorporates state-of-the-art M2M features; internal antennas, with an external antenna option; flexible mounting options; wide temperature range and flexible powering options.

The device enables you to remotely connect your assets, premises or equipment to gather real-time business insight and streamline your business operations. The routers open Linux operating system and Software Development Kit (SDK) offers the capability to install custom software applications within the substantial onboard flash memory. The device also allows remote system monitoring, remote diagnostics, remote configuration and firmware updates over the air.

APPLICATION EXAMPLES



SPECIFICATIONS

PROCESSOR & STORAGE

- Powerful 450Mhz ARM9 processor with 64MByte DDR2 Ram
- 256MByte Flash memory storage (~120MB available on board space for user storage)

OPERATING SYSTEM

- Embedded Linux 3.6

DATA RATES

- EV-DO Rev.A data rates: FL max. 3.1Mbps, RL max. 1.8Mbps
- 1xRTT Advanced data rates: FL max. 307.2kbps, RL max. 307.2kbps

CELLULAR BANDS

- CDMA (BC0/BC1), 800/1900MHz

CONNECTIVITY

- 1x (RJ-45) 802.3af Power over Ethernet (PoE) 10/100Base-TX Port with Auto MDIX

RESET BUTTON

- Reset button (recessed, requiring pen/paperclip) with three functions: Reboot, reboot into recovery mode, and reset unit to factory defaults

ANTENNAS

- 2x internal cellular antennas (1x main antenna and 1x receive diversity antenna)

ANTENNA CONNECTORS

- 1x SMA connector for optional external main antenna (including mechanical RF switch for auto changeover to external antenna)

LED INDICATORS

- 7x tri-colour LEDs. Power, Network and 5x Signal Strength indicators
- Easy and clear LED status display for connection status, connected network type, and connection errors

CELLULAR

- NAT Disable for framed route configuration
- Transparent bridge mode using PPPoE to allow the router to transparently forward Public WAN IP address to a downstream device

NETWORK & ROUTING

- Static Routing, RIP (v1/v2), Port Forwarding and DMZ
- Dynamic DNS
- VRRP for redundant router failover
- DHCP Server, including:
 - Address reservation by MAC address
 - Custom DNS server definitions
 - DHCP Relay
 - DHCP list display in Web-UI
 - Advanced DHCP Option configuration (Option 42 NTP, Option 66 TFTP, Option 150, Option 160)

VPN

- PPTP Client for VPN connectivity to remote PPTP VPN Server
- IPsec tunnel termination (for up to 5 tunnels)
- GRE Tunnelling
- OpenVPN (Client, Server and P2P)

ADMINISTRATION & CONFIGURATION

- Web-based User Interface (HTTP/HTTPS) for full device status and configuration
- Password protected configuration file backup and restore for quick device configuration and device cloning
- Telnet Command Line Interface for status monitoring, configuration and control
- SNMP v1/v2 including cellular specific MIB, config and firmware download
- TR-069 Client for remote device configuration, configuration backup and restore, and firmware upgrade
- SMS Client (Send/Receive) including inbox, outbox
- Ping monitor watchdog (Reset connection on repeated ping failure)
- Diagnostic Log Viewer (remote and local)
- System Status and Security Logs
- NTP Server Support for network time sync of device's system clock
- Device User Guide stored on the device and accessible via the Web-based User Interface (HTTP/HTTPS)

Advanced Diagnostics and Control via SMS

- Query status information – such as Signal Strength, WAN IP, Uptime, and many more
- Configure device remotely via SMS
- Execute commands via SMS – such as reboot, reset to defaults, go offline, and many more
- Secure SMS management using sender whitelisting and password management
- SMS acknowledgement replies for queries and commands

FIRMWARE MANAGEMENT

- Firmware Upgrade locally via LAN or remotely Over-The-Air (HTTP/HTTPS, SNMP, TR-069)
- Multiple firmware image storage on device and dynamic install
- Triggered firmware upgrade via SMS (initiate download & install from HTTP/HTTPS)

SOFTWARE DEVELOPMENT KIT

- Develop and install custom software applications
- Open Linux standard development environment
- Develop applications/scripting in standard ANSI C/Shell script and LUA
- Package manager built into Web-UI for Application installation/removal
- API (C, LUA and Shell libraries) to the unit's internal Runtime Database to allow full status monitoring configuration and control of the device from custom applications

TEMPERATURE

- Operating Temperature Range: -40°C – +80°C
- Storage Temperature Range: -40°C – +85°C

POWER SUPPLY

- DC Power input via 2 pin connector (8 - 35V DC) or optionally via 802.3af Power over Ethernet (PoE)
- Recommended power input rating of 6W via DC Jack (e.g 12V 1.5A), or Class 0 Power Level via PoE
- Field terminable power input via screw type terminal block included (No. 3 flat-head screwdriver required)
- 60v load dump protection on DC Input Jack.
- Dual power mode supported (PoE primary, seamless failover to DC Jack on PoE loss)

DIMENSIONS, WEIGHT & MOUNTING

- Device dimensions (excluding external antenna): 140mm (L) x 103mm (W) x 30mm (D) / 180g
- Wall mount support in multiple orientations via embedded mounting holes
- DIN Rail mount support via plastic bracket included in box (Top hat section rail TH 35 IEC60715)
- C Rail mount support via mounting rail built into housing (C section rail C30 IEC60715)

REGULATORY COMPLIANCY

- FCC

*Specifications subject to change without notice



NetCommWireless

NETCOMM WIRELESS LIMITED

Head Office - 18-20 Orion Road, Lane Cove,
NSW 2066, Sydney, Australia ABN 85 002 490 486

E: sales@netcommwireless.com

www.netcommwireless.com